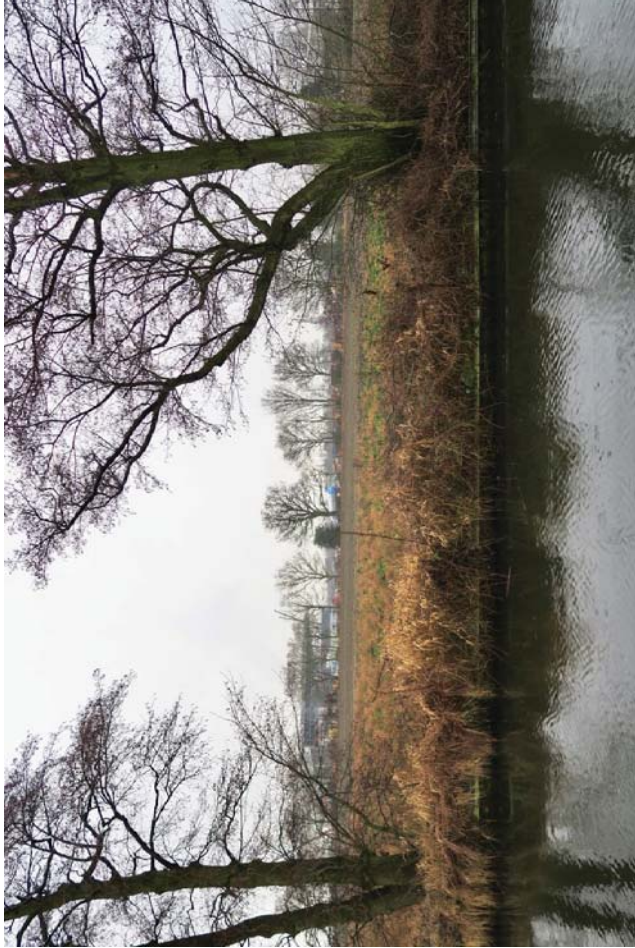


The West Midlands Rail Freight Interchange Order 201X
Technical Appendix 9.6 - Photographic Gazetteer of Heritage Receptors
Regulation 5(2)(a)
Montagu Evans - November 2017

APPENDIX 9.7 PHOTOGRAPHIC GAZETTEER OF BUILT HERITAGE RECEPTORS

Map Group A. Staffordshire and Worcestershire Canal Conservation Area



A.1 Gailey Wharf to Gravelly Way Bridge (northern section)



A.2 Gravelly Way Bridge to Calif Heath Bridge (central section)



A.3 Calf Heath Bridge to Long Moll's Bridge (southern section)



A.4 Gailey Wharf to the M6 Motorway

Map Group B. Heath Farm, Vicarage Road (Locally Listed Grade B)



Map Group C. Woodside Farm (non-designated receptor (Staffordshire HER MST17495))



Map Group D. Gravelly Way Bridge (non-designated receptor (Staffordshire HER MST1254))



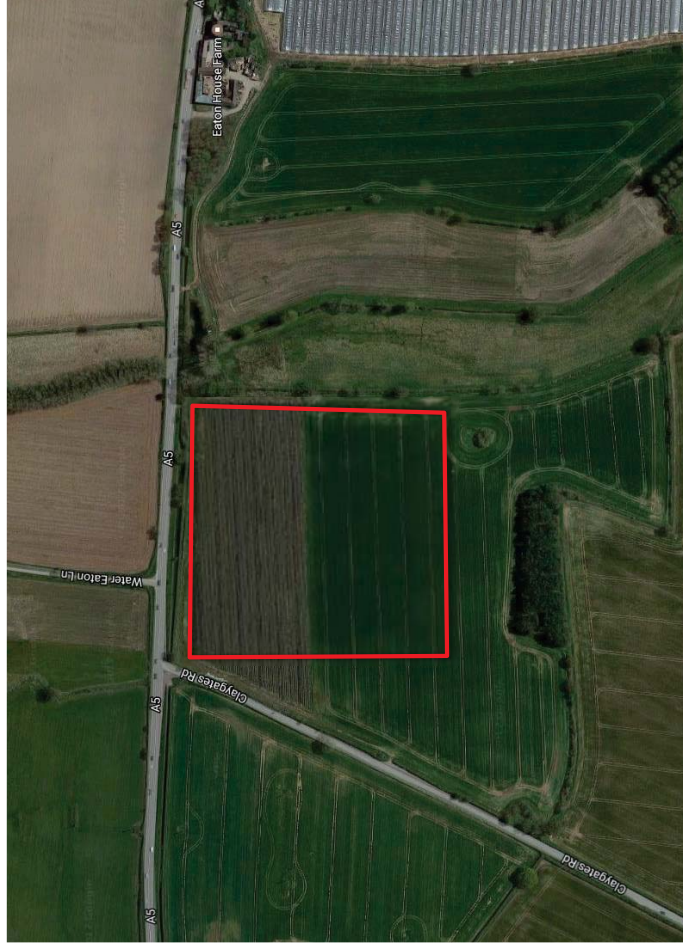
Map Group E. Straight Mile Farm (non-designated heritage receptor)

No image available

Map Group F. Six Romano-British Scheduled Monuments at Water Eaton



Map Group F.1 Two Roman camps north of Water Eaton (Scheduled Ancient Monument). Indicative boundary shown in red



Map Group F.2 Roman Fort west of Eaton House (Scheduled Ancient Monument). Indicative boundary shown in red



Map Group F.3 Roman Camp, Kinvaston (Scheduled Ancient Monument). Indicative boundary shown in red



Map Group F.4 Camp north east of Stretton Mill (Scheduled Ancient Monument). Indicative boundary shown in red



Map Group F.5 Site of Pennocrucium, east of Stretton Bridge (Scheduled Ancient Monument). Indicative boundary shown in red



Map Group F.6 Roman villa 300yds (270m) NW of Engleton Hall (Scheduled Ancient Monument). Indicative boundary shown in red

Map Group G. Rodbaston Old Hall moated site and fishpond (Scheduled Ancient Monument)



Map Group H.1. Brewood



Map Group H.1 Church of St Mary and St Chad, Brewood (Grade I)



Map Group H.2 Westgate, Forecourt Wall and Gate Piers (Grade II*)

Map Group 1. Somerford Hall (Grade II*)



Map Group J. Stretton Hall



Map Group J.1 Stretton Hall and Combined Service and Stable Wing (Grade II*)



Map Group J.2 Church of St John, Stretton (Grade II*)

Map Group K. Church of St Mark and St Luke, Shareshill (Grade II*)



Map Group L. Chillington (Grade II* RPG) – entrance from Brewwood Road



Map Group M. Gailey Wharf



Map Group M.1 Round House (Grade II)



Map Group M.2 Wharf Cottage (Grade II)



Map Group M.3 Gailey Lock (Number 32) and Gailey Bridge (Number 79) (Locally Listed Grade A)



Map Group M.4 Gailey Wharf (Locally Listed Grade A)

Map Group N. Aspley Farnhouse (Grade II)



Map Group O. Canal between Long Moll's Bridge and Deepmore Bridge



Map Group O.1 Long Moll's Bridge (Locally Listed Grade A)



Map Group O.2 Deepmore Bridge (Locally Listed Grade A)

Map Group P. Calf Heath Bridge (Locally Listed Grade A)



Map Group Q. Canal between Gailey Wharf and the M6 Motorway



Map Group Q.1 Brick Kiln Lock (Number 33) (Locally Listed Grade A)



Map Group Q.2 Bogg's Lock (Number 34) (Locally Listed Grade A)

NO IMAGE AVAILABLE

Map Group Q.3 Canal Feeder (Locally Listed Grade B)